



Our in-house engineering staff can design and build a "ground up" or "retrofit" control and/or data acquisition system for you. We have successfully designed and built systems for:

- Thermoforming
- Prototyping
- Extrusion/Pulltrusion
- Medical Manufacturing
- Molding & Diecasting
- Food Processing

**Specialists in Industrial Heating, Process Control and System Integration**

# HEAT & CONTROL



## WATLOW

Industrial Heaters, Temperature Controls, Power Switching Devices, Multi-Zone Process Controls, Thermocouples, RTDs



## CARLO GAVAZZI

Industrial Heaters, Temperature Controls, Power Switching Devices, Multi-Zone Process Controls, Thermocouples, RTDs



## SPECVIEW PLUS

SCADA Software for People with Other Jobs: Auto Configuring MMI, Data Logging and Recipe Software for Most Controller Products



## NELSON HEAT TRACING SYSTEMS

Self-Regulating, Constant Wattage, MI Cable, Controls and Accessories



## WILLIAMSON

Non-Contact Temperature Measurement, Two-Color Sensors, Aluminum Non-Contact Temperature Management



## TUTCO

Band, Strip and Cartridge Heaters, Hot Runner Heaters, Temperature Controllers



## GEFRAN ISI

Melt Pressure Transducers, Gauges, Indicators and Controllers, Linear Position Transducers, Encoders, Geflex Distributed Control, GILOGIK II PLC, VF Drives, Inverters, Servo Motors, Tachometers



## BACKER MARATHON HEATER

Hobart, Glenn Starflex, Cartridge, Band and Silicone Rubber Heaters



## ISLAND CITY LLC

Dynamic Heat Generators, Flameless Heat Generation



## ATC DIGITEC

Timers, Counters, Hour Meters



## INOR

Temperature Transmitters, Signal Conditioners



## PYROMATION

Industrial Thermocouple Elements, Special Purpose Temperature Sensors

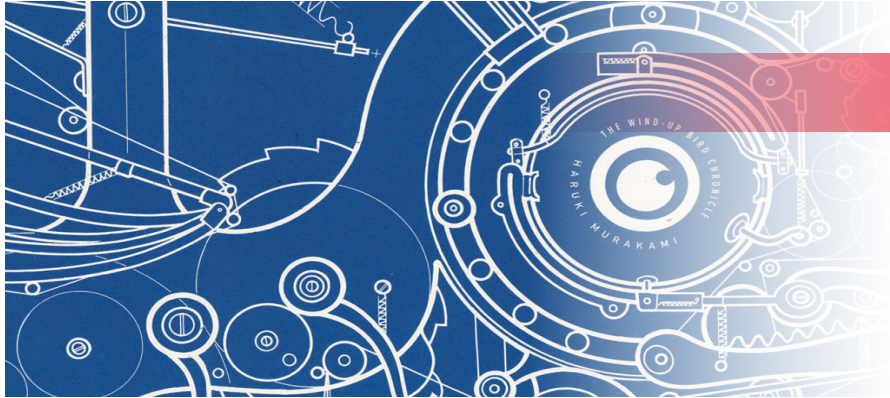
**CALL TOLL FREE: 1-877-368-4376**

500 East Travelers Trail, Suite 100 • Burnsville, MN 55337 • 952.888.1771 • Fax 952.888.1942

Visit us at [www.entherm.com](http://www.entherm.com) • Email: [sales@entherm.com](mailto:sales@entherm.com)



## ***Specialists in Industrial Heating, Process Control and System Integration***



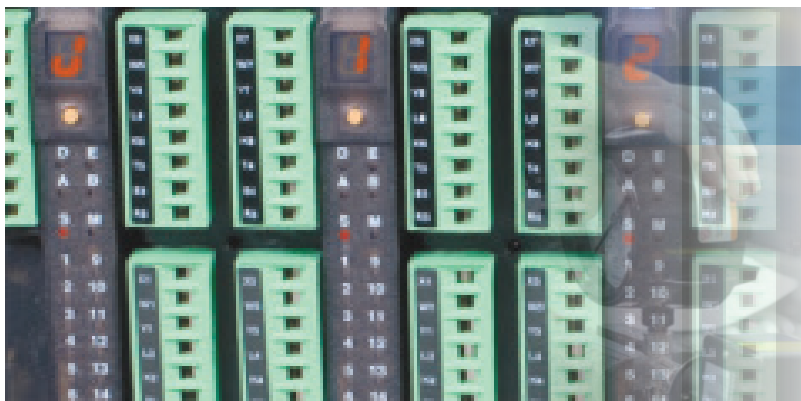
### ***DESIGN***

Enterm will partner with you as a member of your design team, providing expertise in the area of heating, sensing and control. We will work to provide a high performance heating solution.



### ***REBUILD***

Save money and resources by rebuilding existing systems utilizing updated controls and power switching components. Enterm will assist with specification of components, retrofit design and startup of rebuilt systems



### ***INTEGRATE***

Enterm has the resources to provide a complete turnkey solution for your company's control systems. We partner with UL panel shops and certified installers to provide a ready to run solution

**CALL TOLL FREE: 1-877-368-4376**

**500 East Travelers Trail, Suite 100 • Burnsville, MN 55337 • 952.888.1771 • Fax 952.888.1942  
Visit us at [www.enterm.com](http://www.enterm.com) • Email: [sales@enterm.com](mailto:sales@enterm.com)**