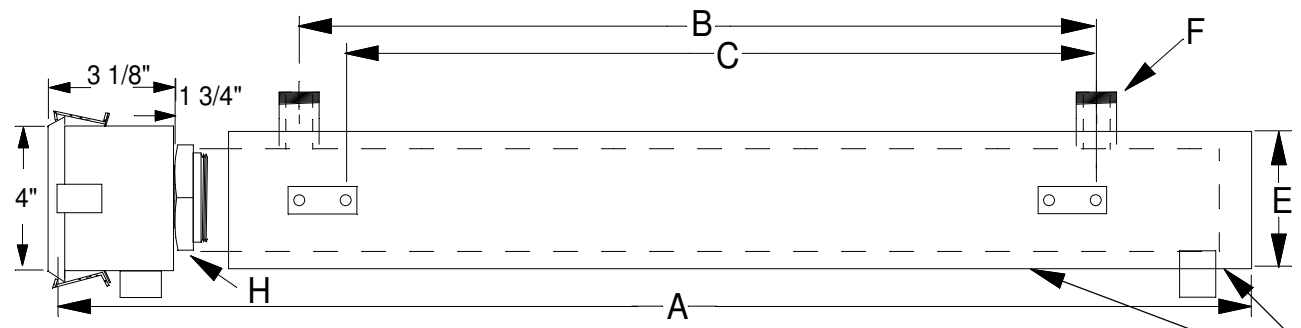
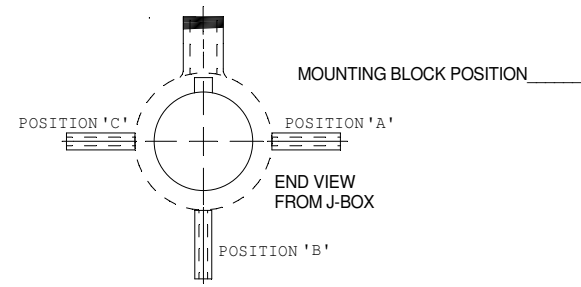
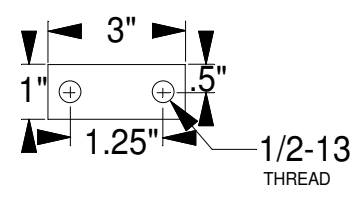


A _____
 B _____
 C _____
 D _____

E _____
 F _____
 G _____
 H _____



SEE NOTE



STANDARD MOUNTING BLOCK

NOTE: 1/2" NPT DRAIN PLUG OPTIONAL
 ALL CIRCULATION HEATER VESSELS
 COVERED WITH A GALVANIZED STEEL
 SHELL UNLESS OTHERWISE SPECIFIED

DIMENSIONS ARE IN INCHES (MM)
 TOLERANCES ARE AS FOLLOWS, UNLESS NOTED

1/XX _s + 1/8" (3mm)	1/XX _s + 1/16" (1mm)
.0X _s + .01" (.25mm)	.00X _s + .005" (.1mm)

ANGLES ± 1°

NOTES:

REVISION DATE	REV. NUMBER	DESCRIPTION OF REVISION	REV'D BY	APP'D BY

Glo-Quartz® Incorporated
 Industrial Electric Heaters & Controls since 1952
 1550 South Euclid Avenue
 Tucson, Arizona 85713

This document is the property of Glo-Quartz Incorporated
 It is provided for customer use only, and is not to be
 disclosed to other sources for any reason without express
 written approval from Glo-Quartz. Possession does NOT
 constitute approval.

TITLE: SCREWPLUG HEATER, THREADED FITTINGS		
CUSTOMER:		
DESIGN BY:	DESIGN DATE:	
DRAWN BY:	DRAWN DATE:	
CHECKED BY:	CHECK DATE:	
RELEASED FOR:	SCALE:	SHEET No.:
DRAWING NUMBER:	REV.:	